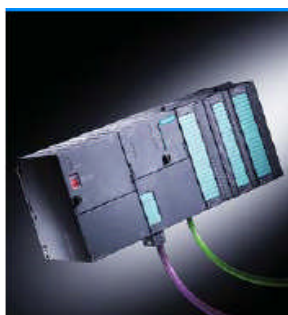


# How to configure an Anybus PROFIBUS Slave module with a Siemens Step7 PLC.



## History

Revision	Date	Description	Responsible
0.1	2001-04-08	Created	Martin Falkman
1.0	2001-05-02	Released	Martin Falkman
1.1	2001-05-07	Updated according to internal discussions	Martin Falkman
1.2	2001-06-05	Completed according to internal discussions	Leif Malmberg
1.21	2001-06-07	“Company Confidential” footer removed	Martin Falkman
2.0	2007-08-20	Major rewrite	Thorbjörn Palm

## Contents

<b>1. Applicable Anybus products</b>	<b>2</b>
<b>2. Requirements</b>	<b>3</b>
<b>3. Solution overview</b>	<b>3</b>
<b>4. Hardware Configuration</b>	<b>4</b>
4.1. Anybus module settings	4
4.2. PLC configuration	6
<b>5. PROFIBUS configuration</b>	<b>9</b>
5.1. Importing the GSD file	9
5.2. Configuring the Anybus module	9
5.2.1. I/O configuration	11
5.2.2. I/O configuration using data consistency	13
<b>6. Anybus configuration</b>	<b>16</b>
6.1. Communicator configuration	16
6.2. X-gateway configuration	18
<b>7. Testing</b>	<b>19</b>
<b>8. More information about the network and products</b>	<b>21</b>
<b>9. List of Figures and Tables</b>	<b>22</b>
<b>Appendix</b>	<b>23</b>
Appendix 1 Connecting the bus cable with the D-SUB connector	23
Appendix 2 Errors and diagnostics	24
Appendix 3 Troubleshooting network physics	26

## 1. Applicable Anybus products

Description	Name / Type
Anybus X-gateway	PROFIBUS
Anybus Communicator	PROFIBUS
Anybus-S Slave DP-V1	PROFIBUS
Anybus-CompactCom	PROFIBUS
Anybus-IC	PROFIBUS
Anybus -PCI	PROFIBUS

## 2. Requirements

Description	Name / Type	Version
Siemens S7 PLC	CPU 315-2 DP	6ES7 315-2AF02-0AB0
Siemens PLC programming cable	n.a.	n.a.
PC with Siemens PLC programming software	Simatic Step7	5.4.1.0
PROFIBUS slave module	Anybus-S PROFIBUS	1.3
GSD file for the Anybus-S Slave Interface, Anybus-PCI, Anybus-IC and the X-gateway Slave Interface	HMS_1013.GSD	1.5
GSD file for the Anybus Communicator	HMS_1803.GSD	1.2
GSD-file for the Anybus CompactCom	HMS_1811.gsd	2.08
GSD-file for the Anybus-IC	HMS_1810.gsd	1.1
Anybus-S Parallel Design Guide	Design Guide	1.13
Anybus-S Fieldbus Appendix PROFIBUS	Fieldbus Appendix	1.2
PROFIBUS standard cable	n.a.	n.a.
PROFIBUS D-SUB contacts	n.a.	n.a.
Power supply 24VDC	n.a.	n.a.

Note: The GSD files can be downloaded at the website [www.Anybus.com](http://www.Anybus.com).

## 3. Solution overview

Below you find an overview of the system configuration that is described in this document. In this case the Anybus Slave module is used as an example. Other nodes may be attached to the network, but are not necessary.

**Note:** This document is valid for all Anybus Slave PROFIBUS modules. However sections written in *italics and blue text* describe the configuration of a specific product.

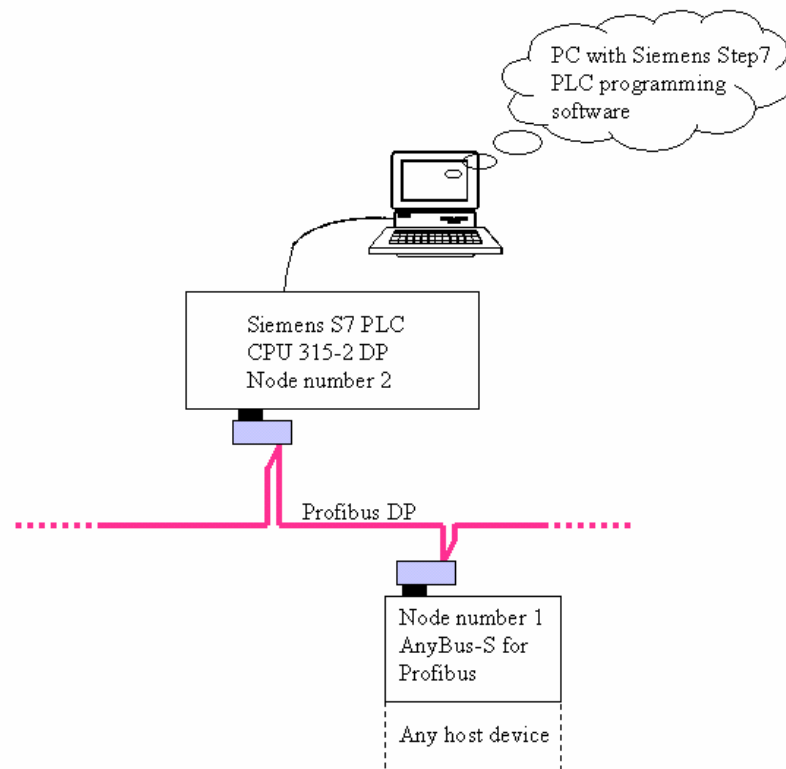


Figure 1 Hardware connection overview

## 4. Hardware Configuration

### 4.1. Anybus module settings

#### Anybus Communicator and the X-gateway:

*For the Anybus Communicator and the Anybus X-gateway the address is set by switches. See the description of the Anybus Slave below. In the case with the Communicator the configuration can also be done by mailbox commands.*

#### Anybus-PCI, Anybus-IC and the Anybus-CompactCom:

*For the Anybus-PCI, IC and CompactCom the address is set by the application. See the respective manual or addendum for more details.*

#### Anybus-S Slave:

*The address setting is done with the two rotary switches on the Anybus Slave module. However in some applications the application interface is used to set the addresses with software. The address is set to 1 in this example.*

The Anybus-S Slave Interface also has a terminating switch.

- The **terminating switch** should be set to “**ON**” if:
  - The module is the last node on the network => physical end of the bus.
  - No other termination is used at this end of the network.
- The **terminating switch** should be set to “**OFF**” if:
  - There are other nodes on both sides of the module in the network.
  - The module is the last node on the network and a PROFIBUS D-SUB connector is used which is equipped with a built in and activated termination.

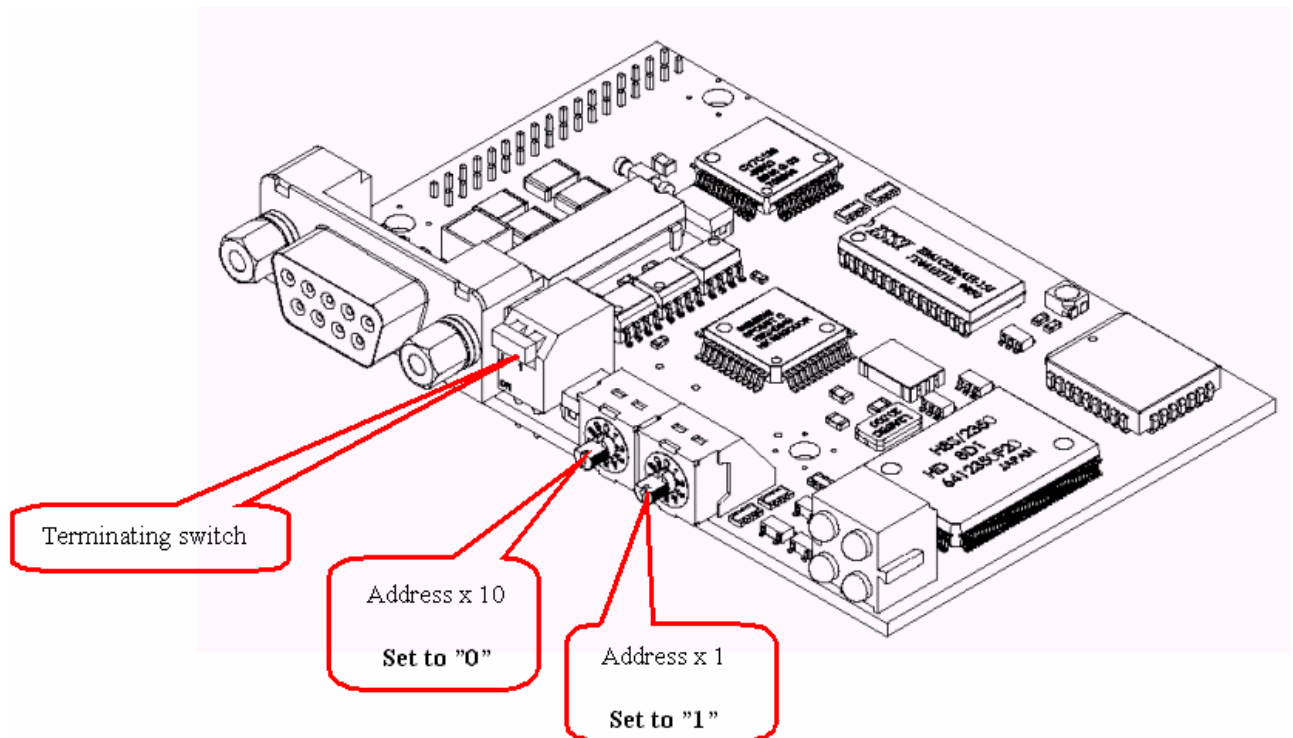


Figure 2 Anybus-S PROFIBUS hardware settings

**Note:** The PROFIBUS network must always be terminated at both ends.

## 4.2. PLC configuration

The PLC system hardware configuration is done solely with the Siemens Step7 tool.

In order to configure the bus it is necessary to set up the PLC and master hardware first. In this example we are using an S7315-2 CPU and a 2A power supply with a standard rack. Start the Simatic software and start a new project. Right click on PROFIBUS and insert a Simatic 300 Station as shown below.

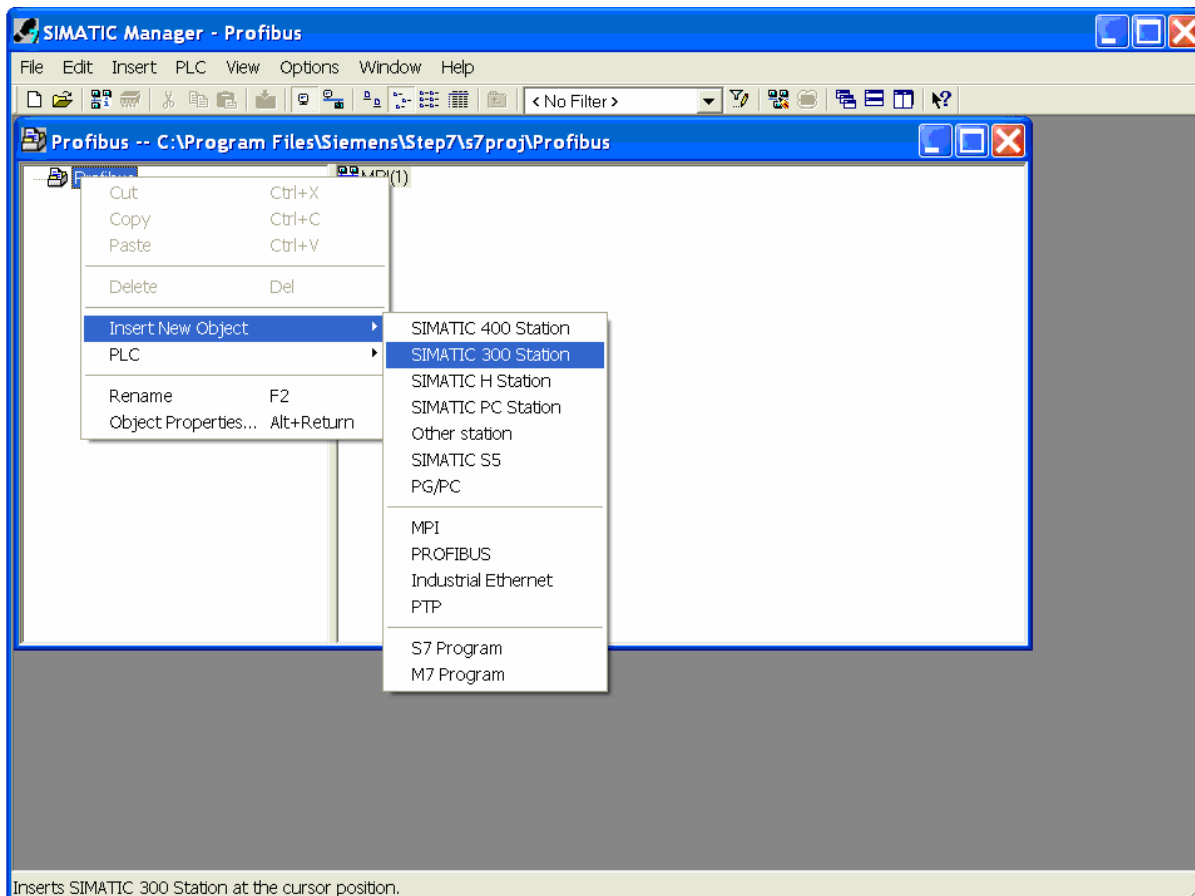


Figure 3 Inserting a new PLC.

Then double click on the new SIMATIC 300 station and on Hardware to open the hardware configuration.

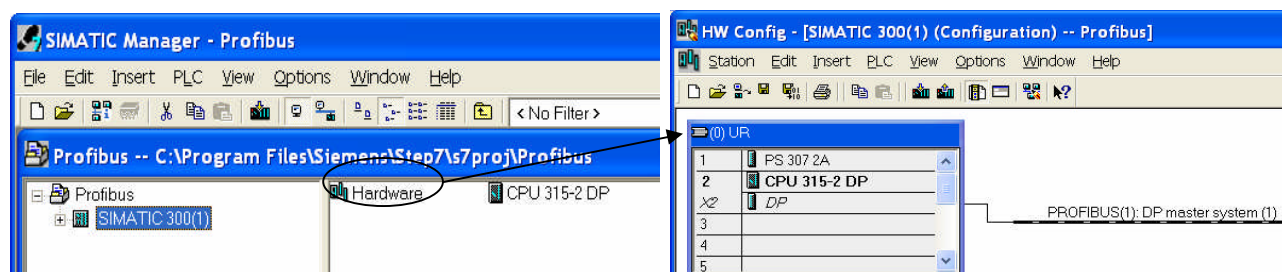
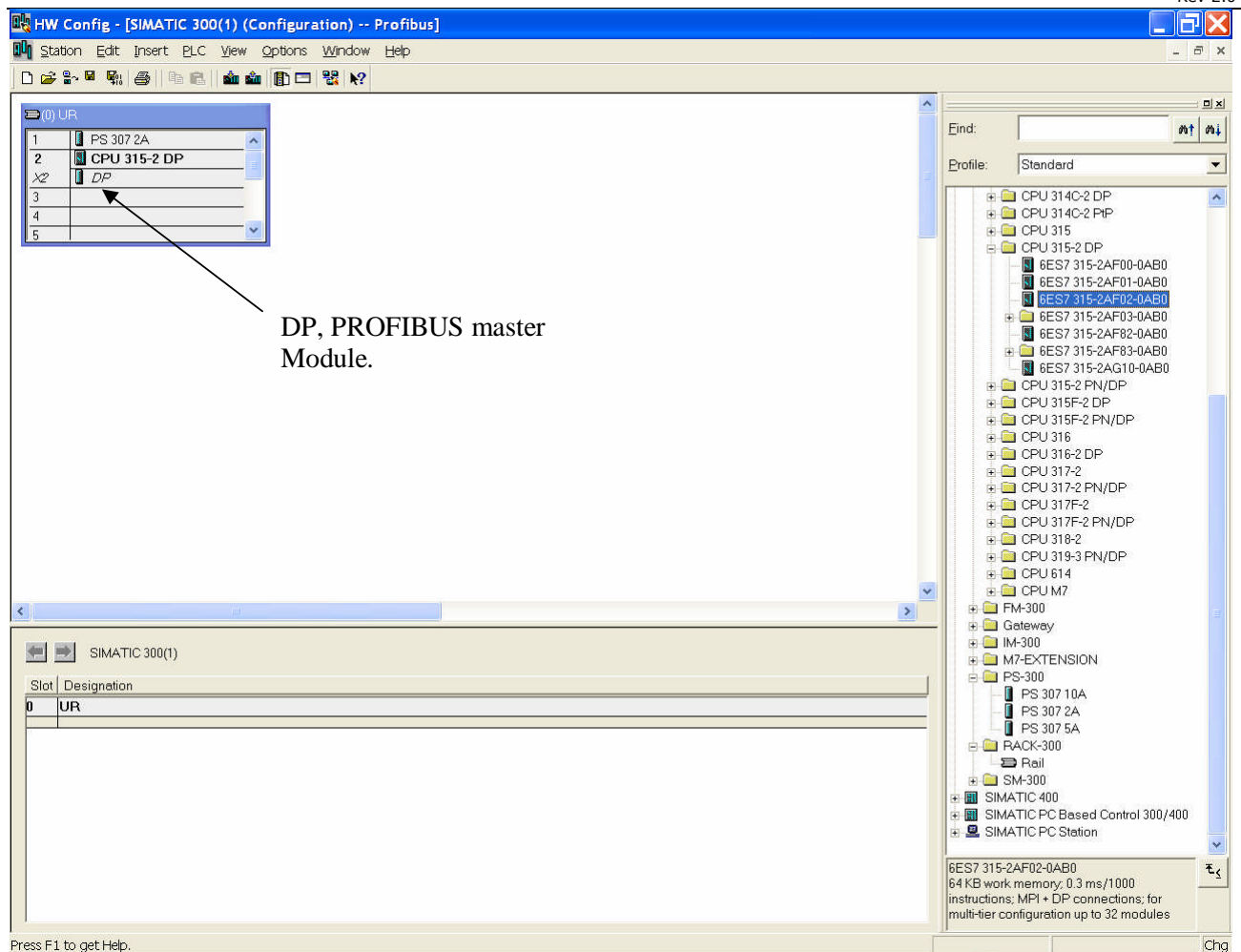
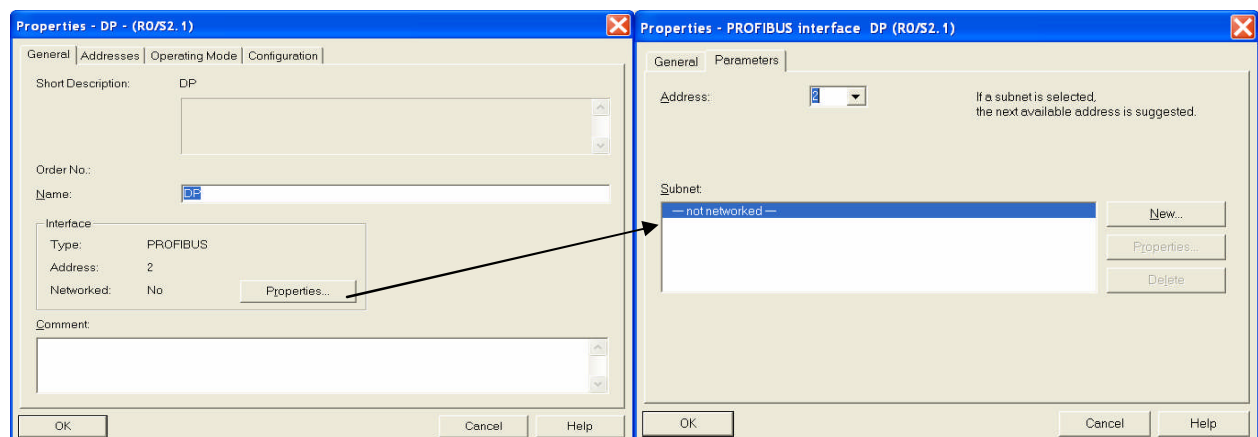


Figure 4 Opening the hardware configuration. The right figure shows the network when completed.



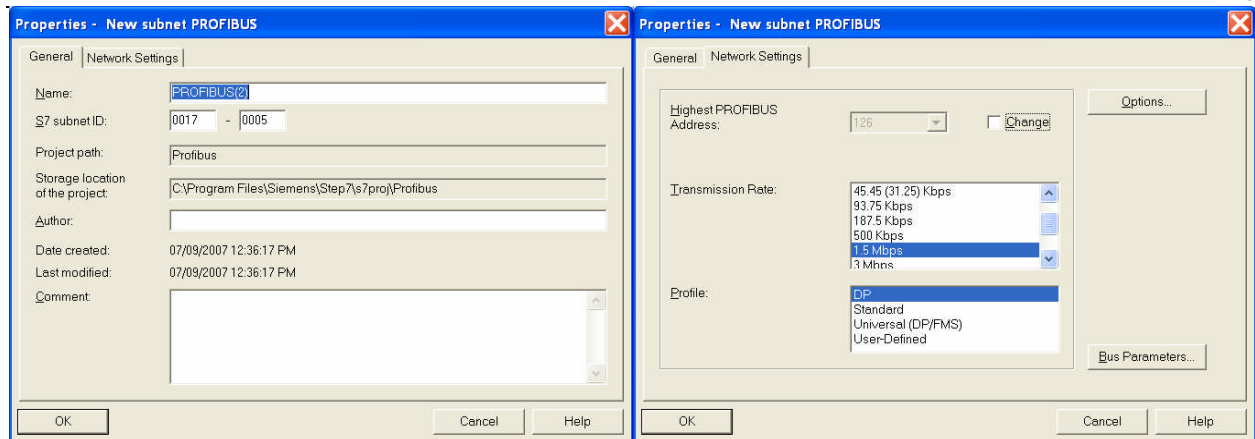
**Figure 5 Adding the hardware to the configuration.**

Add a rail, the power module and the PLC as shown above. The next step is to double click on the DP, PROFIBUS master, module to configure the PROFIBUS network. Click on properties in the dialogue as shown below.



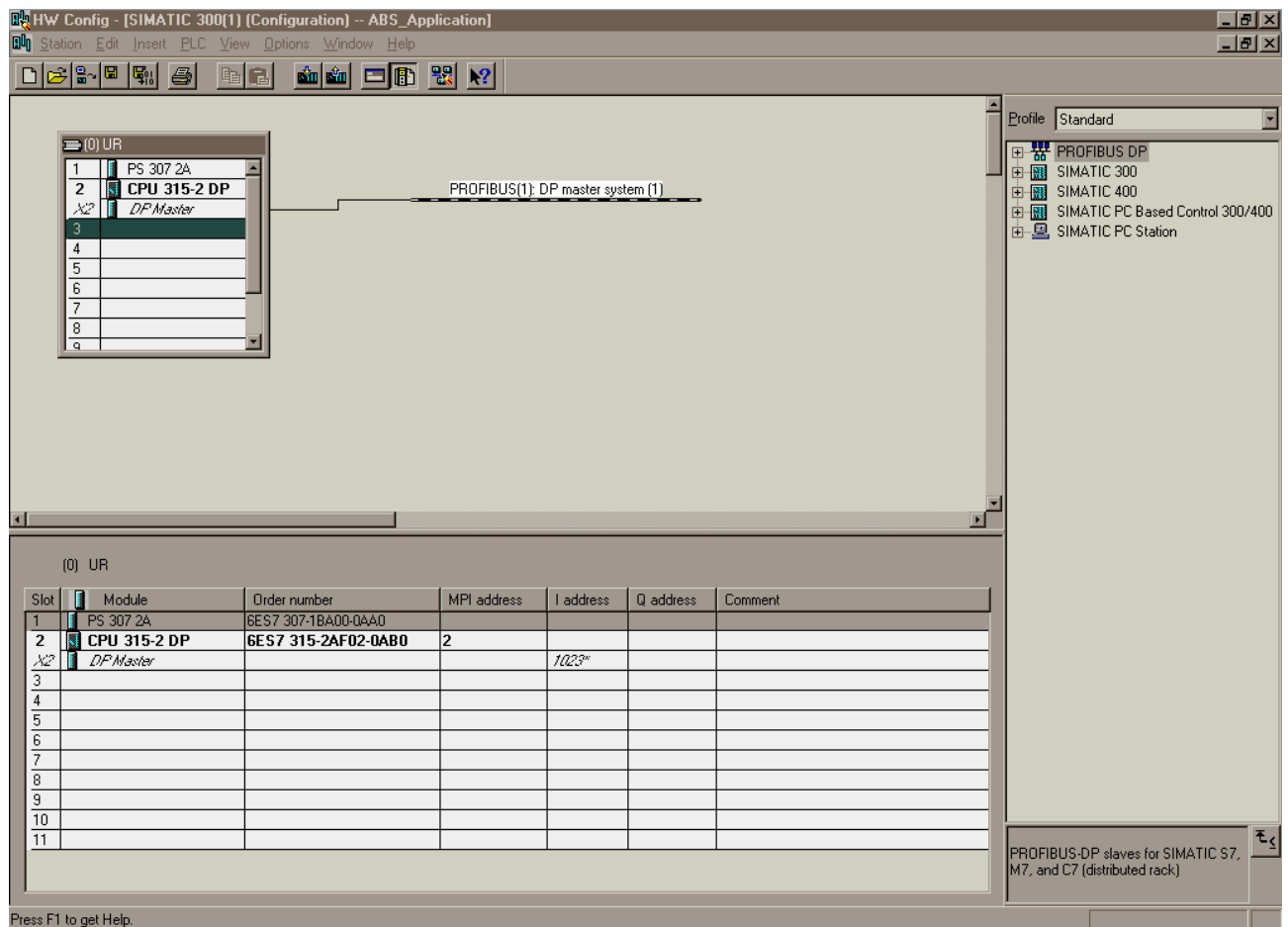
**Figure 6 Changing the properties of the PROFIBUS module and defining a new PROFIBUS network.**

Then click on new to define a new network.



**Figure 7** Configuring the properties of the PROFIBUS network.

Select the desired settings and press OK. When the PLC hardware is set up it will look like described in the figure below.



**Figure 8** PLC with empty bus



## 5. PROFIBUS configuration

### 5.1. Importing the GSD file

It is necessary to import the Anybus GSD-file to the configuration tool in order to include the Anybus Module. In this case an Anybus Slave module is added as a slave in the network. The GSD-files can be downloaded at HMS<sup>1</sup> webpage.

**Note:** After downloading the GSD-file has to be renamed. The SIMATIC software does not accept file names longer then 12 characters.

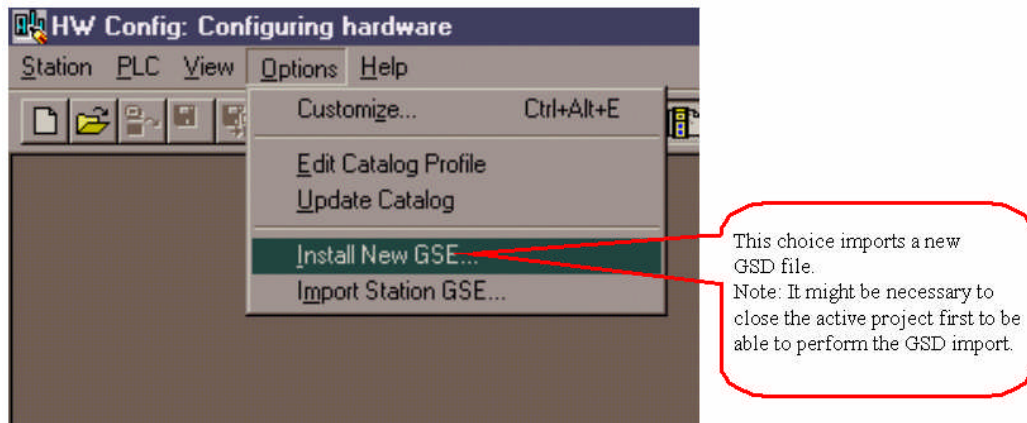


Figure 9 Install a new GSD file in "HW Config"

### 5.2. Configuring the Anybus module

The Anybus module can be found in the hardware catalogue after the GSD file has been imported.

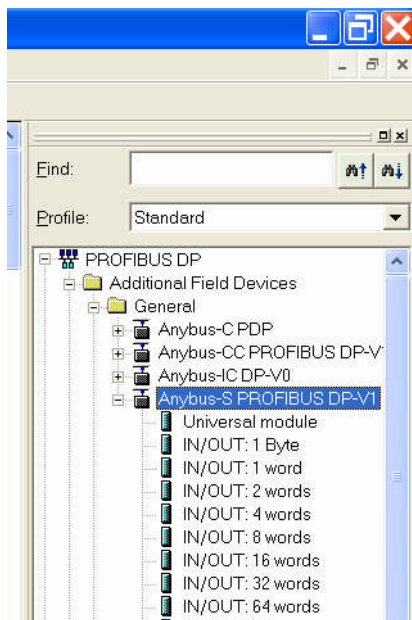


Figure 10 The Anybus module in the Hardware Catalogue

It is now possible to include the Anybus slave in the network.

<sup>1</sup> [www.Anybus.com](http://www.Anybus.com)

Open up the “Anybus-S PDP” entry in the hardware catalogue and drag and drop the Anybus module on to the network, see description in Figure 11.

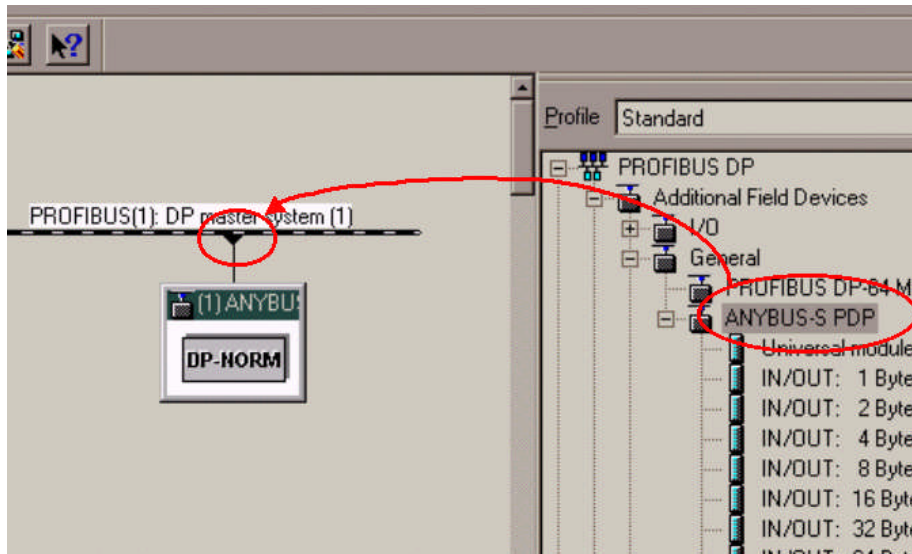


Figure 11 Drag and drop the Anybus module to the network

It is then necessary to configure the Anybus module itself. The only configuring to be done is setting up the node address, input and output data area sizes and offset address.

In Figure 12 it is shown how to edit the node address. The edit-window for the node address is opened by doing the click sequence ❶, ❷, ❸. At ❸ it is possible to set the desired node address. The address set here must equal the address set on the Anybus-S module, see the chapter 4.1 Anybus module setting.

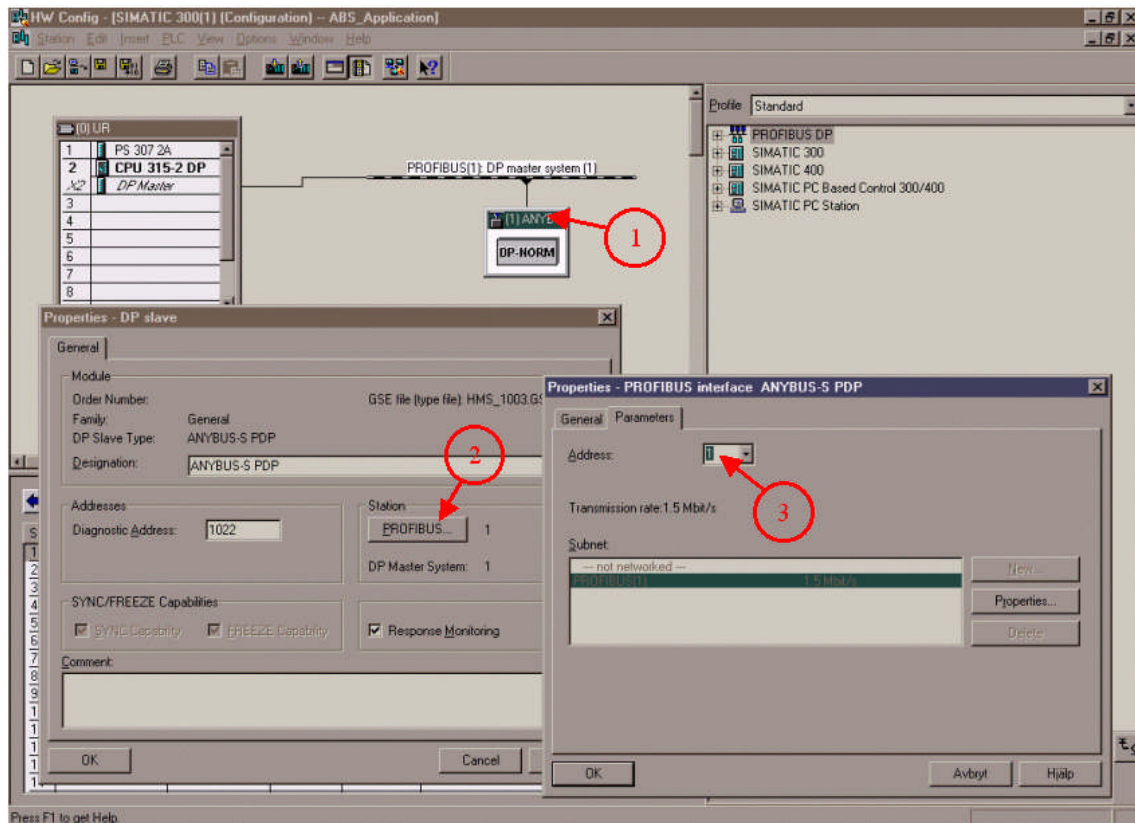


Figure 12 Adjusting the node address in HW Config

### 5.2.1. I/O configuration

The choice of module(s) you like to use depends on what your application demand is. It is possible to choose these modules freely and to compose the I/O sizes needed, see examples below in table 1.

Table 1 Examples of data area modules

Bytes needed by the application	Modules to use
4 In + 2 Out	4 In + 2 Out
7 In + 12 Out	4 In + 2 In + 1 In + 8 Out + 4 Out
32 In + 32 Out	32 In/Out
68 In	64 In + 4 In

**Note:** Reading or writing more than four bytes consistent data from the I/O image, see the next chapter. *For all Anybus PROFIBUS modules except the Anybus-CompactCom, more than 2 bytes of consistent data is only supported when using the Universal module.*

Expand the Anybus-S PDP tree in the navigation list to the right. The modules are then composed together in the “module list” of the Anybus as shown in the figure below.

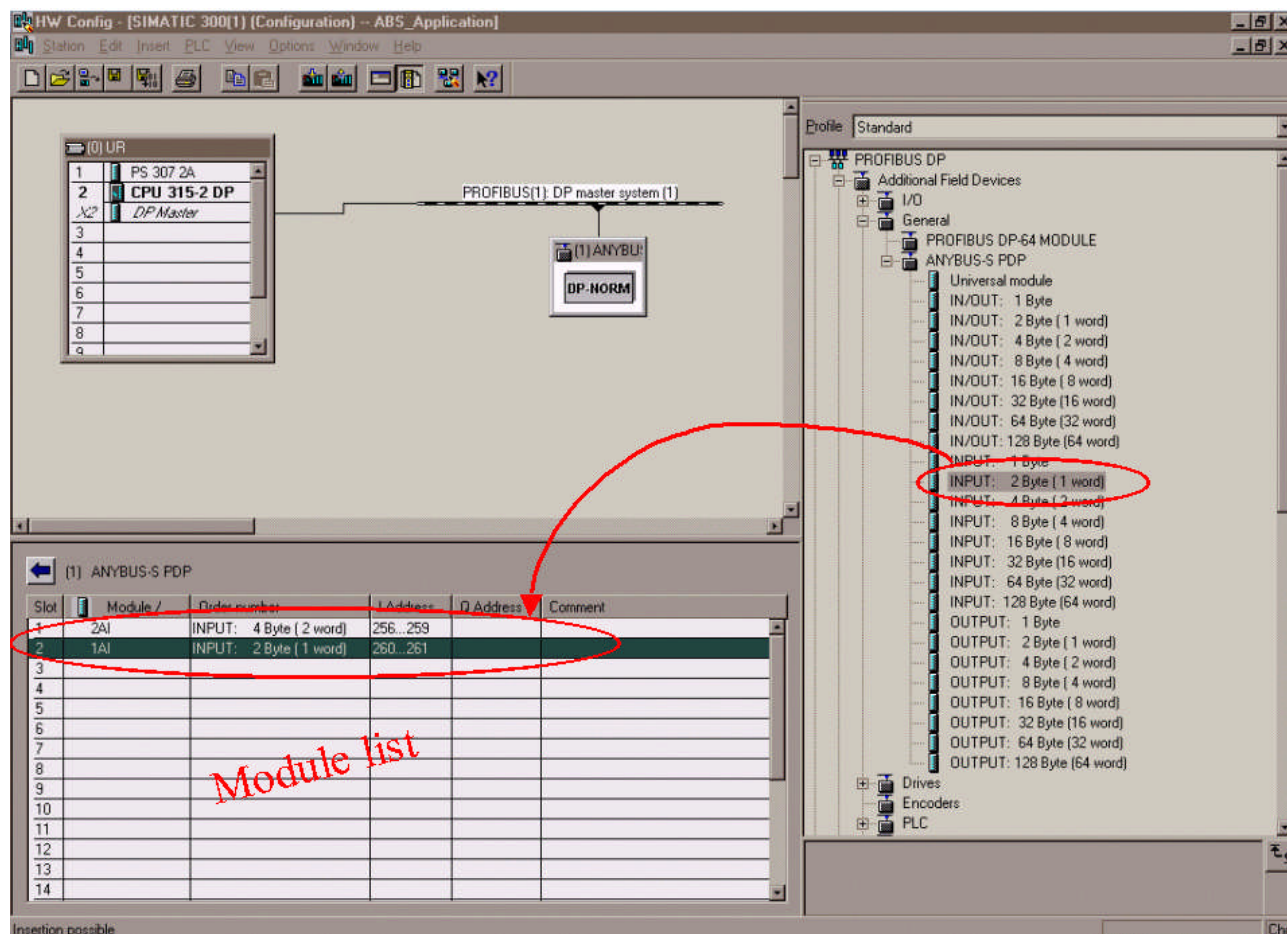
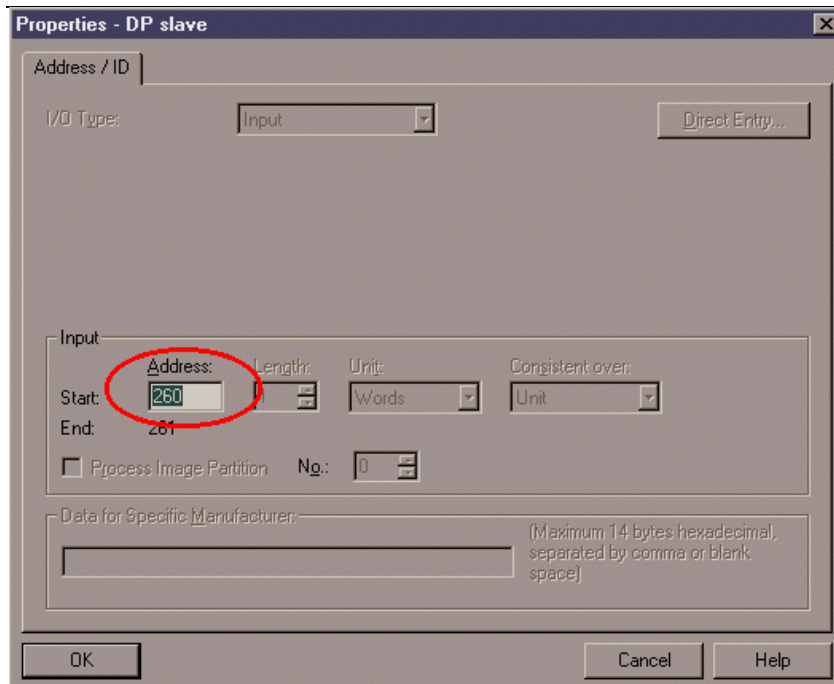


Figure 13 Selecting In and Out modules with “Drag and Drop”

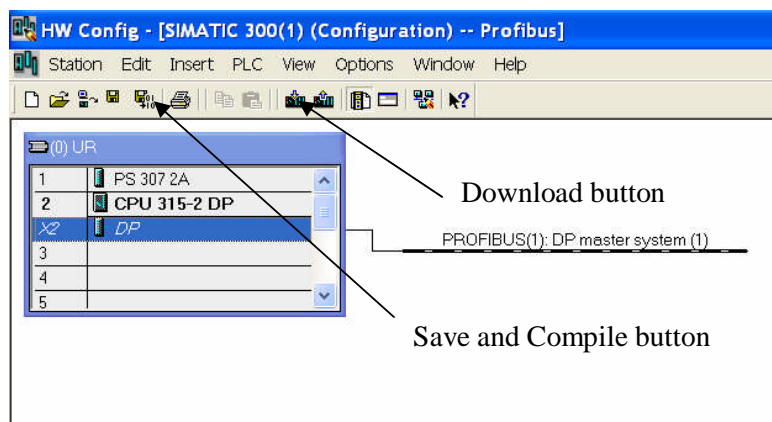
By double clicking on a module in the “module list” it is possible to set the offset addresses. See example in Figure 14.



**Figure 14 Adjusting the offset address**

The offset addresses can be chosen freely but certain restrictions may apply depending on what CPU is used.

When all the above settings are done it is possible to perform a download of the configuration to the PLC. Press the Save and Compile button and then the download button.



**Figure 15 Downloading the configuration to the PLC.**

The bus will then go online and start data exchange when the PLC is set to run mode.



## 5.2.2. I/O configuration using data consistency

The S7 PLC can read out one, two or four bytes consistent from the I/O-image directly by accessing the data as a Byte, a Word or a Double Word as described in the previous chapter, 5.2.1. This is the normal usage and fits most applications. However if it is required to read out other consistent data areas it is necessary to use the System Function Blocks SFC14 and SFC15. Below follows a description of these function blocks.

The first thing that has to be done is to specify the consistent data area in the hardware configuration. The “Universal Module” can be selected with “drag and drop” as shown in Figure 16.

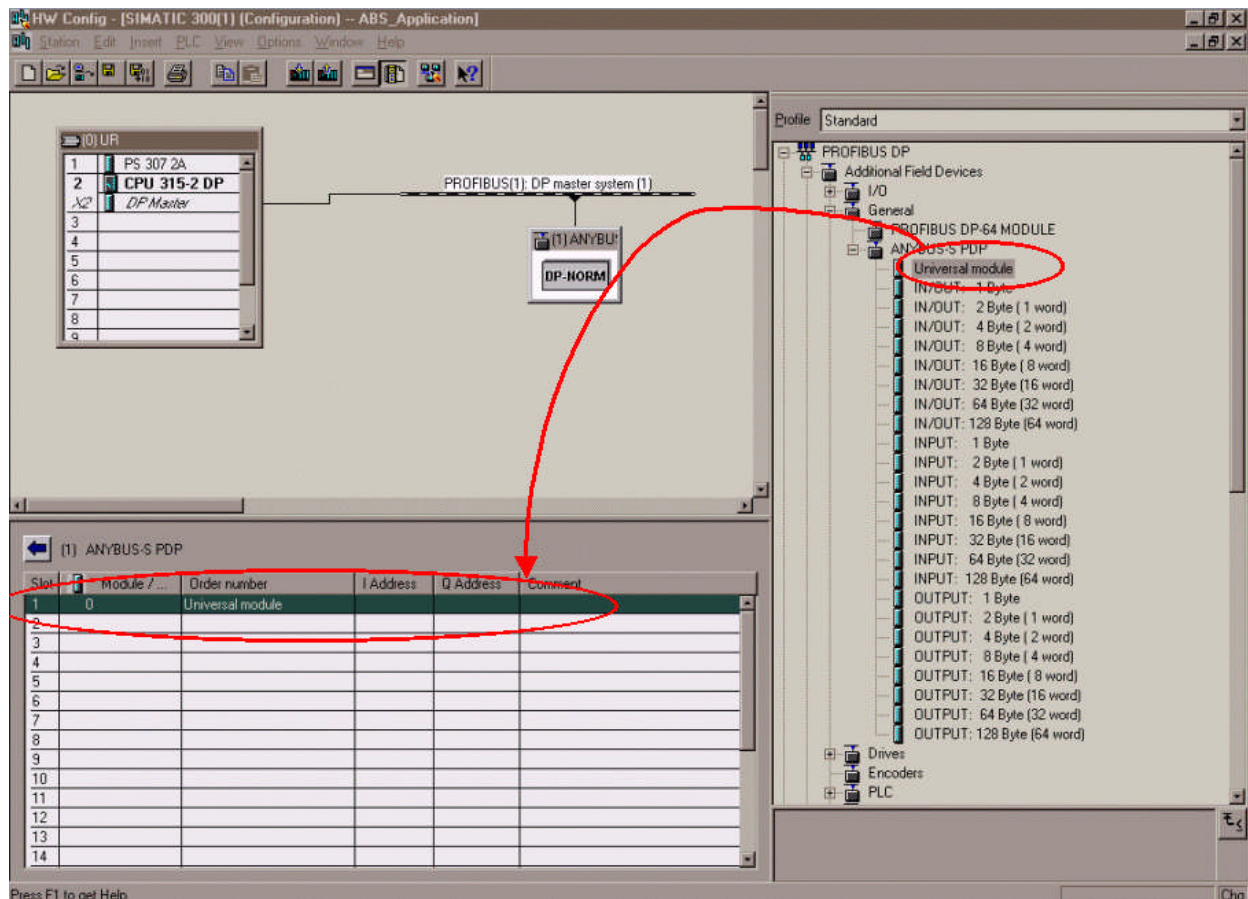


Figure 16 Selecting the Universal Module for consistent data transfer

In Figure 17 it is shown how to set the properties of the Universal Module. This window is opened by double clicking on the Universal Module line in the list of selected modules. The desired data type (In, Out, or In/Out) is set with the list box shown at ❶. Then the offset, length, unit and consistency settings can be done as shown at ❷. In the example below the output data length is set to 12 bytes and the input data length set to 38 bytes with consistency over the total length. The address offsets are set to 46 respective 92.

The “Data for Specific Manufacturer” shown at ❸ is not used unless the device manufacturer specifies this.

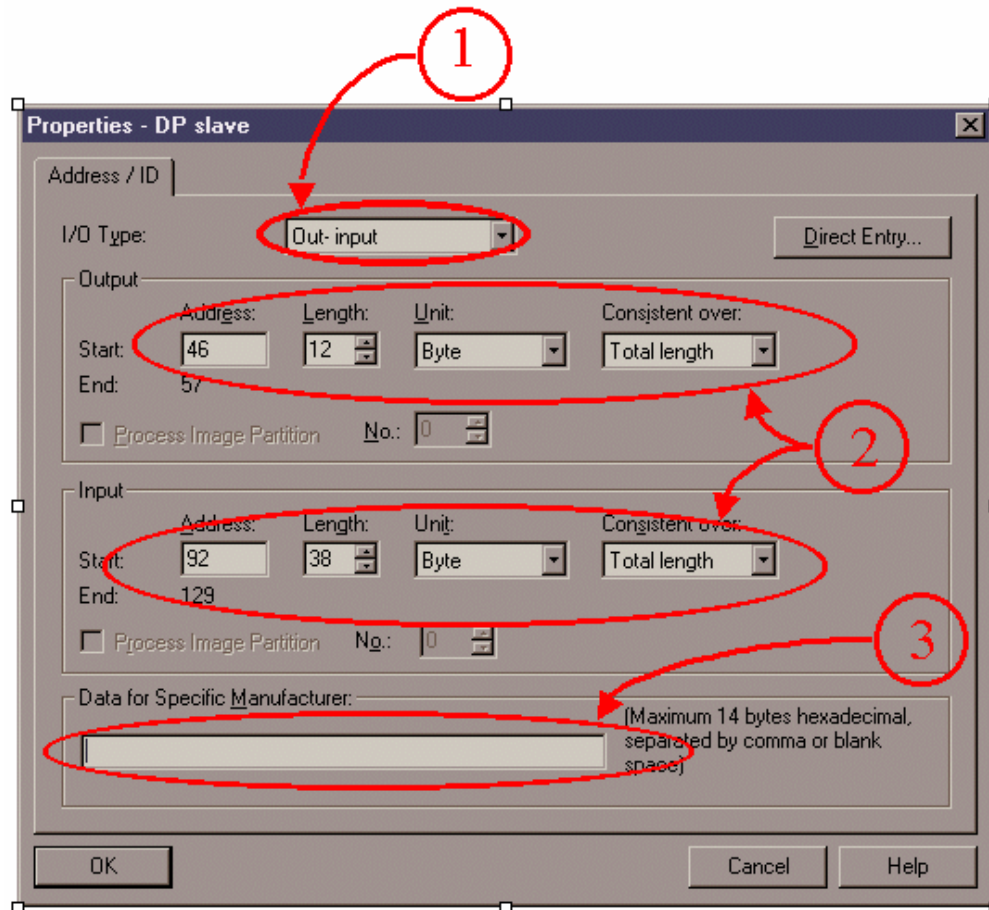


Figure 17 Specifying the properties for the Universal Module

To read out the consistent data specified in Figure 16 and Figure 17 a PLC program has to be written that uses SFC14 and SFC15. An example of this is shown in Figure 18. These two SFC:s are included in the Step7 standard package and they also have to be imported into the active project. They can be copied from the “Standard Library” or from the CPU online. Refer to the Step7 documentation for details regarding this.

The function blocks ensure that data consistency is secured over the complete data length. Where the data is to be read or put in the process image is decided in the hardware configuration, see Figure 17.

### SFC14 Input data:

The purpose of SFC14 is to read out the data from the In area of the process image and then copy the data to another storage location.

**LADDR:** specifies the start byte address of the data to be read. The value is entered in Hex. In this case the start byte address is 92 (=5C Hex) which can be found at ❷ in Figure 17.

**RET\_VAL:** Storage location for error messages. This is a Word, in this case MW4.

**RECORD:** This is where the data is copied to. In this case it is copied to memory byte 10 to 47. (i.e. MB10-MB47). The length must equal the length set at ❷ in Figure 17.

## SFC15 Output data:

The Purpose of SFC15 is to read the data from any storage location and then copy it to the Out area of the process image.

LADDR: specifies the start byte address of the data to be sent. The value is entered in Hex. In this case the start byte address is 46 (=2E Hex) which can be found at ② in Figure 17.

RET\_VAL: Storage location for error messages. This is a Word, in this case MW6.

RECORD: This is where the data is read from. In this case it is read from memory byte 48-59. (i.e. MB48-MB59). The length must equal the length set at ② in Figure 17.

The data can then be processed as desired (i.e. as byte, word, double word or bit wise) at the other storage location specified at RECORD.

In the example below (Figure 18) it is described how the PLC program can be done.

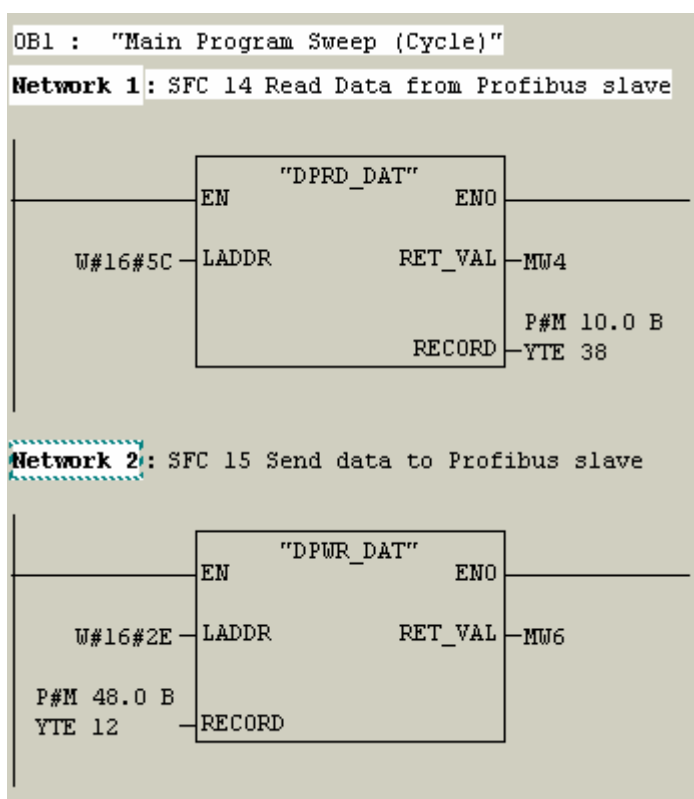


Figure 18 The use of the SFC14 and SFC15 in the PLC program

By highlighting the SFC in the LAD-editor and then pressing "F1" the help function will start and display extended information such as error codes and syntax examples.

## 6. Anybus configuration

The Anybus product has to be configured for the same I/O sizes as set up in the PROFIBUS configuration.

**Note:** The I/O sizes are depending on the application, the configured I/O sizes in this chapter are just examples.

### Anybus-S Slave Interface and the Anybus PCI card:

*The Anybus Slave Interface and the Anybus PCI card are configured by mailbox commands. Refer to respective Fieldbus Appendix for details.*

### Anybus-IC:

*The Anybus-IC is configured by the User Interface using for example the Windows Hyper Terminal. Refer to the Design Guide for details.*

### Anybus CompactCom:

*The Anybus CompactCom is configured by messages send by the application. Refer to the Design Appendix for details.*

### Anybus Communicator and the Anybus X-gateway:

*The configuration of the Anybus Communicator and the Anybus X-gateway is described in separate sections below.*

## 6.1. Communicator configuration

*Start the Anybus Communicator Config Tool. The module is configured for PROFIBUS and generic data mode as shown below. The I/O size is set to 2 bytes in this example.*

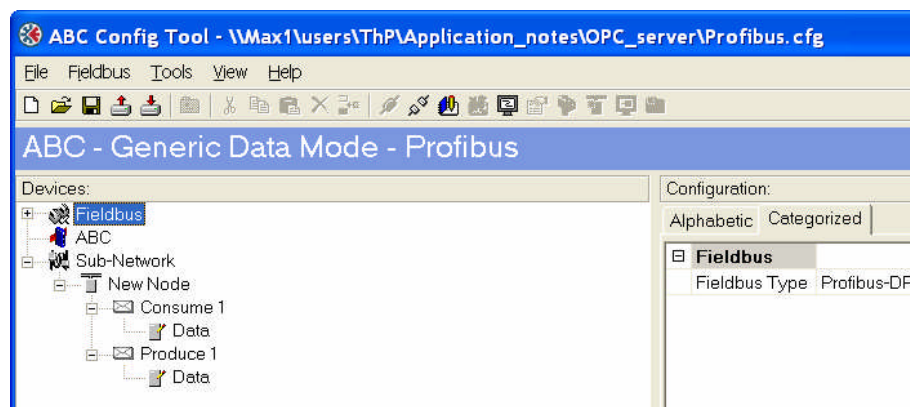


Figure 19 Bus type setup.



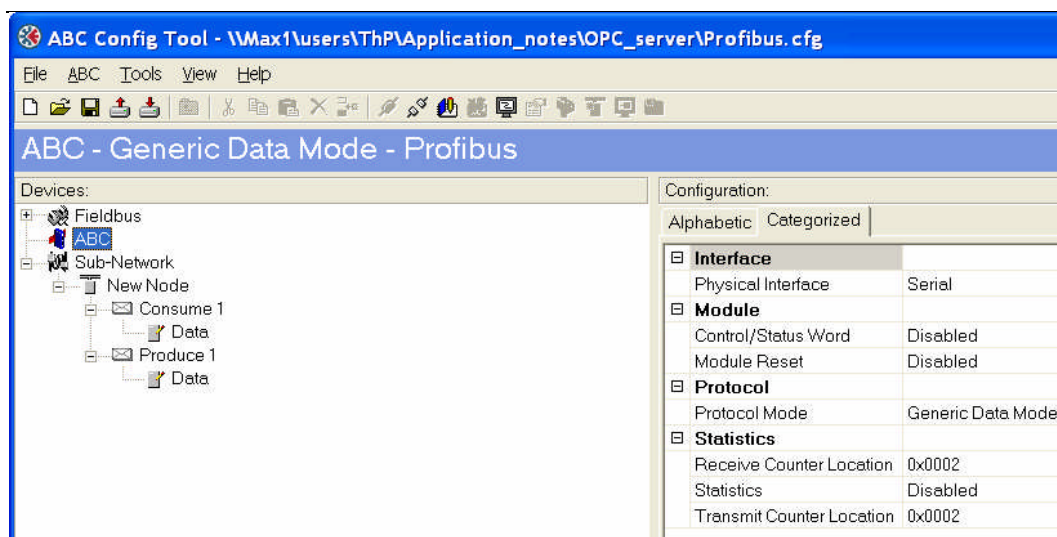


Figure 20 Protocol mode configuration

The sub network is configured as seen in the figure below. The values are left at the default except for the update time for the produce transaction, in this case it is set to 500 ms. Also the bit rate is set to 19200 bits/s.

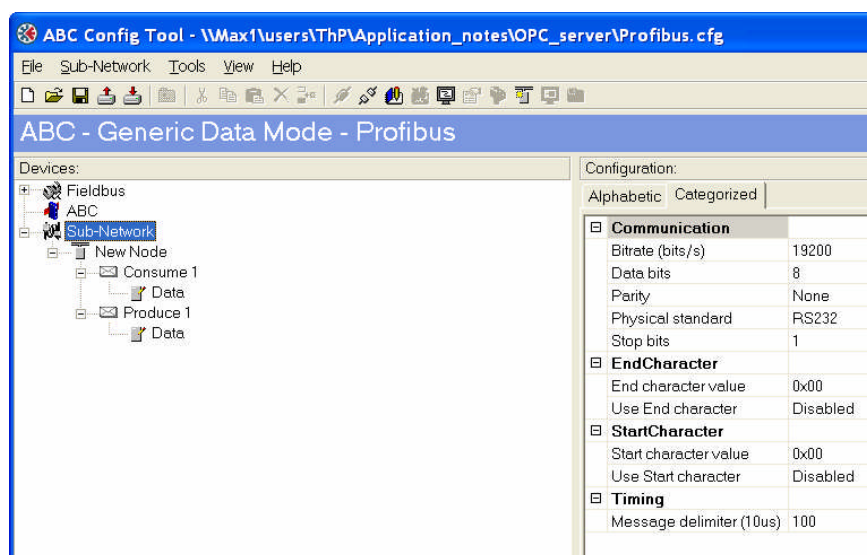


Figure 21 Configuration of sub network

Two bytes of I/O data are used as shown in the figure below.

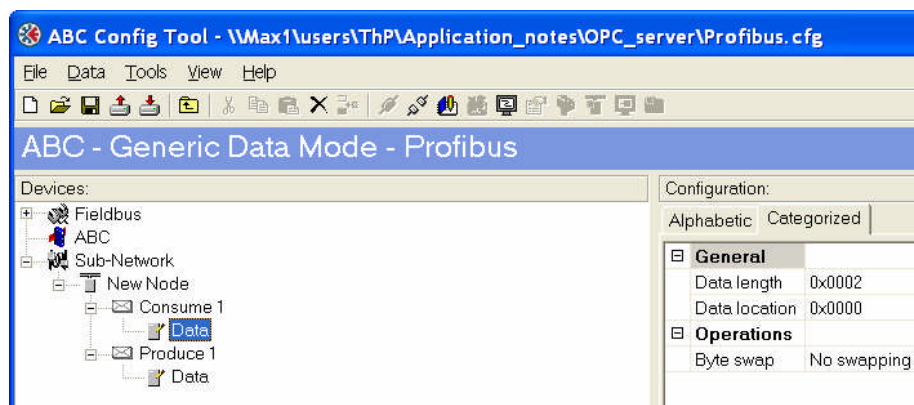
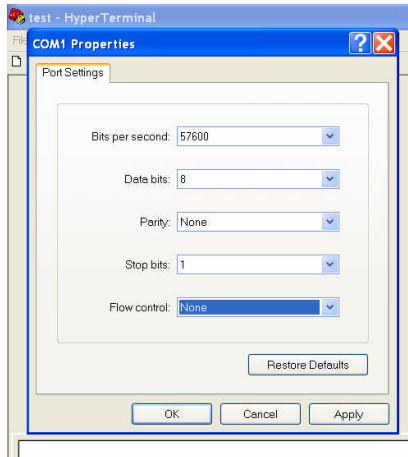


Figure 22 Configuration of I/O data

## 6.2. X-gateway configuration

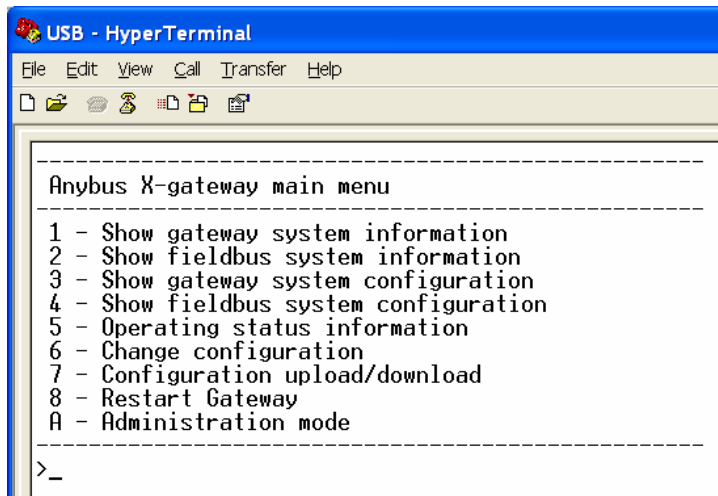
Use the HyperTerminal on a PC and configure the X-gateway, connect a serial cable between the PC and the config port on the X-gateway. Open the "File" menu and click on new, choose the desired COM port and click on OK. The following window will appear.



**Figure 23** Configuring the connection in the HyperTerminal.

Make sure the settings are identical to those shown in the window above. An alternative method is to download the HyperTerminal session file from HMS website<sup>2</sup>, double click on it and select COM port.

Connect and press ESC and the following menu will appear.



**Figure 24** Anybus X-gateway Main menu.

Press 6 and enter the desired configuration. The I/O sizes are depending on the application, the I/O sizes used in this case are just an example. The figure below shows an example; in this case a PROFIBUS Slave/Ethernet IP X-gateway is used. The PROFIBUS Slave is configured for 10 bytes of I/O data and the EtherNet/IP Slave for 8 bytes of I/O data.

<sup>2</sup> [www.Anybus.com](http://www.Anybus.com)

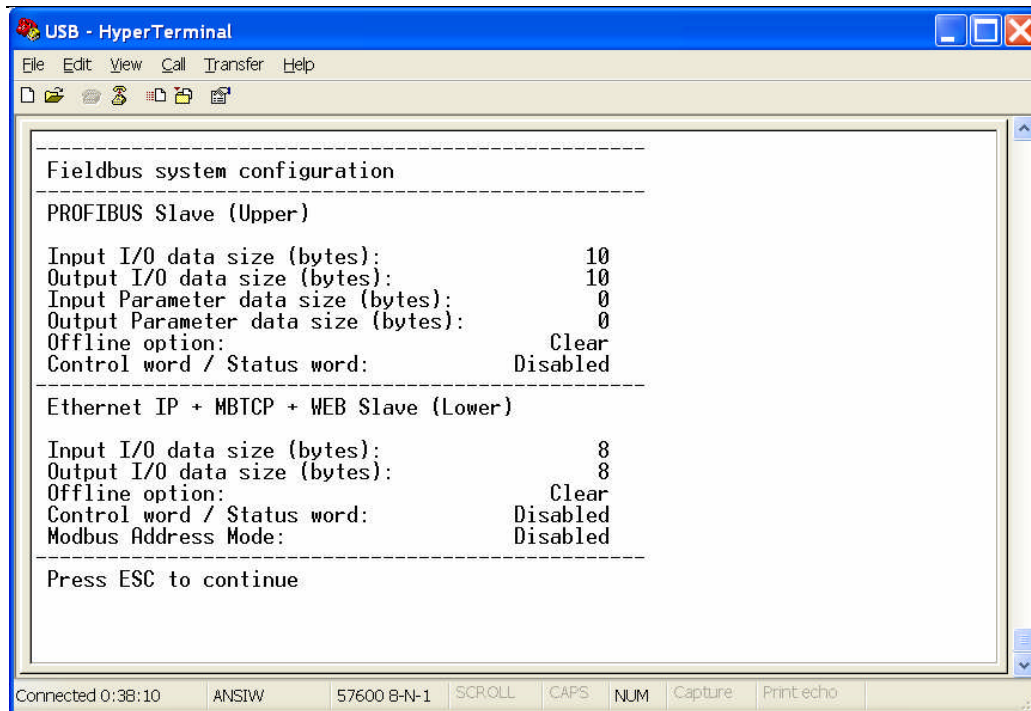


Figure 25 The X-gateway configuration.

## 7. Testing

To verify that the Anybus module and the PLC are correctly configured it is possible to monitor the Input and Output modules in the Hardware config in the SIMATIC software. An Anybus Communicator with a loop back dongle at the serial port is used for the test. In the HW Config window, mark the Output module and open the PLC menu and select Monitor/Modify.

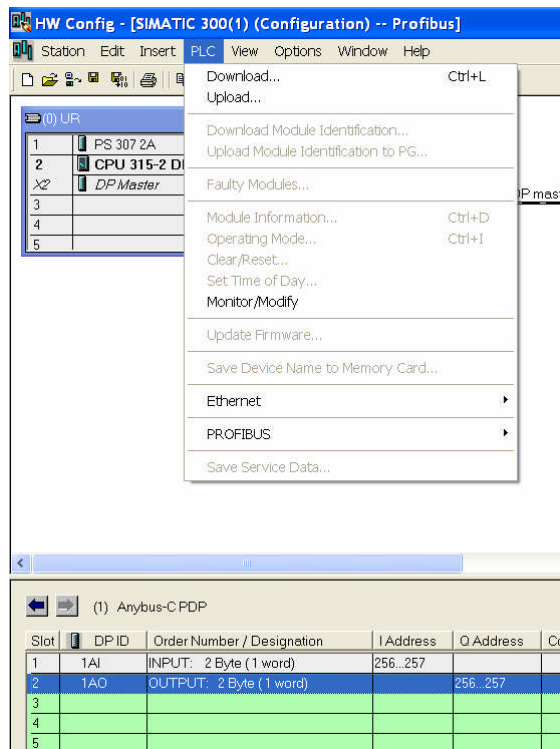


Figure 26 Opening the monitor/modify window.

Then enter a value in the Output module. In this case 45 is entered in the space column Modify value. To accept press the Modify value button.

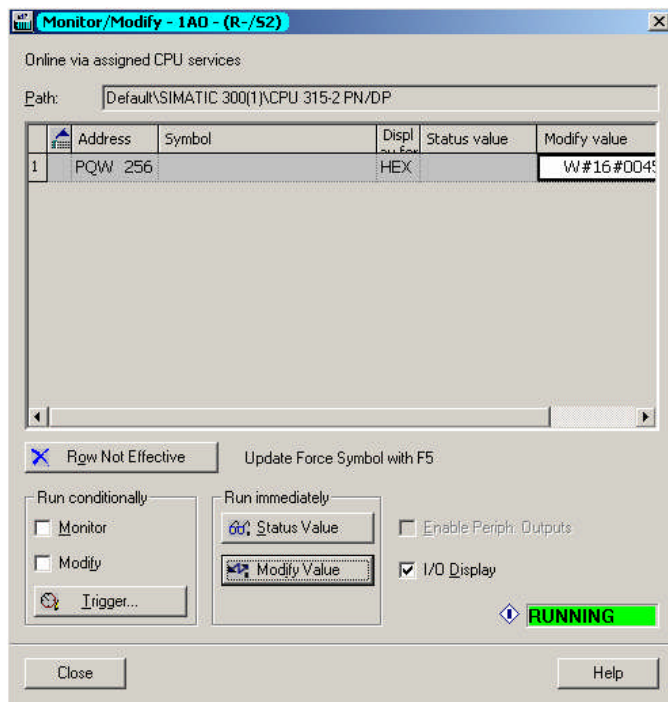


Figure 27 Modifying the Output module.

In the same way the Input module can be monitored. Mark the Input module a open the Monitor/Modify window. Using the correct settings the value 45 will be seen in the Input module after pressing the Status Value button.

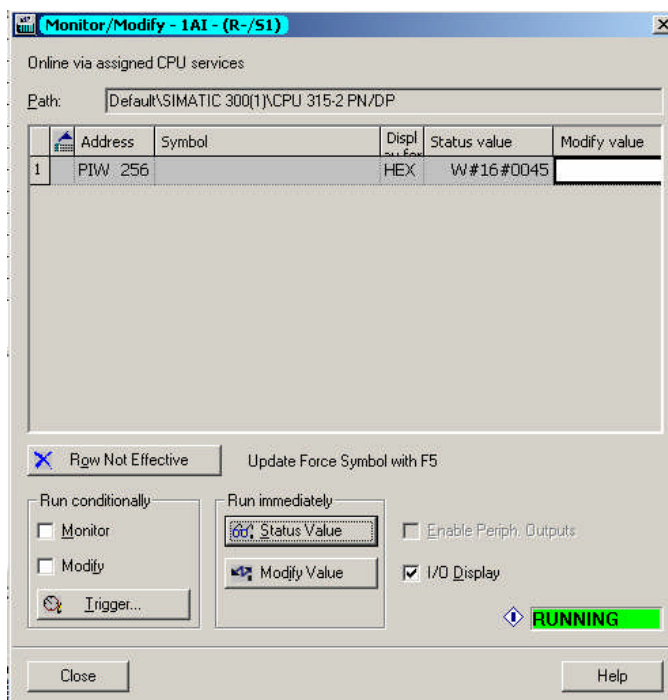


Figure 28 Monitoring the Input module.

---

## 8. More information about the network and products

The latest manuals and GSD files for the Anybus PROFIBUS modules can be found on the HMS homepage [www.Anybus.com](http://www.Anybus.com).

The PROFIBUS user organisation has a homepage on the Internet: [www.PROFIBUS.com](http://www.PROFIBUS.com)

Several technical guides are available in or via this page.

For information concerning the PLC and the PROFIBUS master system refer to the Siemens homepage [http://www.automation.siemens.com/\\_en/portal/index.htm](http://www.automation.siemens.com/_en/portal/index.htm).

## 9. List of Figures and Tables

Figure 1	Hardware connection overview .....	4
Figure 2	Anybus-S PROFIBUS hardware settings .....	5
Figure 3	Inserting a new PLC. ....	6
Figure 4	Opening the hardware configuration. The right figure shows the network when completed. 6	
Figure 5	Adding the hardware to the configuration. ....	7
Figure 6	Changing the properties of the PROFIBUS module and defining a new PROFIBUS network. 7	
Figure 7	Configuring the properties of the PROFIBUS network.....	8
Figure 8	PLC with empty bus .....	8
Figure 9	Install a new GSD file in "HW Config" .....	9
Figure 10	The Anybus module in the Hardware Catalogue.....	9
Figure 11	Drag and drop the Anybus module to the network.....	10
Figure 12	Adjusting the node address in HW Config.....	10
Figure 13	Selecting In and Out modules with "Drag and Drop" .....	11
Figure 14	Adjusting the offset address.....	12
Figure 15	Downloading the configuration to the PLC.....	12
Figure 16	Selecting the Universal Module for consistent data transfer .....	13
Figure 17	Specifying the properties for the Universal Module .....	14
Figure 18	The use of the SFC14 and SFC15 in the PLC program .....	15
Figure 19	Bus type setup. ....	16
Figure 20	Protocol mode configuration .....	17
Figure 21	Configuration of sub network.....	17
Figure 22	Configuration of I/O data .....	17
Figure 23	Configuring the connection in the HyperTerminal.....	18
Figure 24	Anybus X-gateway Main menu.....	18
Figure 25	The X-gateway configuration. ....	19
Figure 26	Opening the monitor/modify window.....	19
Figure 27	Modifying the Output module. ....	20
Figure 28	Monitoring the Input module. ....	20
Figure 29	Standard PROFIBUS D-SUB connector .....	23
Figure 30	Bus connector with built-in terminating resistors and series inductors .....	23
Figure 31	Indication LEDs on the Anybus-S module .....	24
Figure 32	Watchdog LED position .....	25
Figure 33	Step7 Hardware diagnostics .....	26

Figure 34	Troubleshooting the PROFIBUS network .....	27
Figure 35	Test procedure 1.....	28
Figure 36	Test procedure 3.....	28

## Appendix

### Appendix 1 Connecting the bus cable with the D-SUB connector

The Anybus module can be mounted with several types of bus connectors. The standard connector shown below should be used in this example.

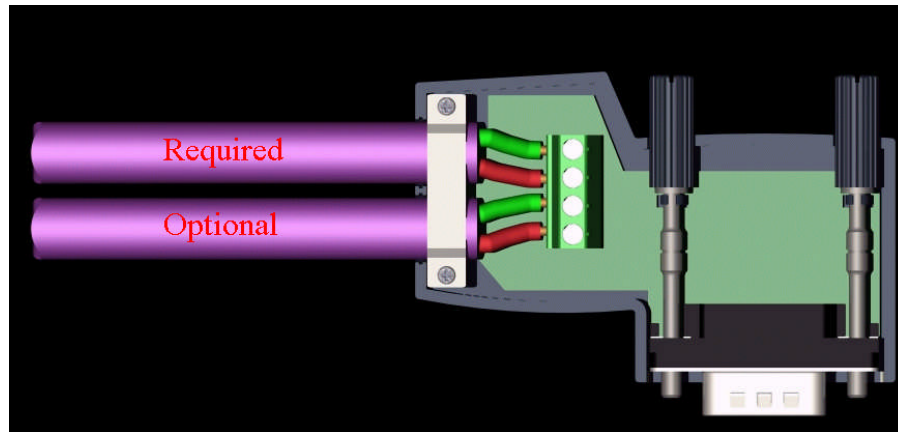


Figure 29 Standard PROFIBUS D-SUB connector

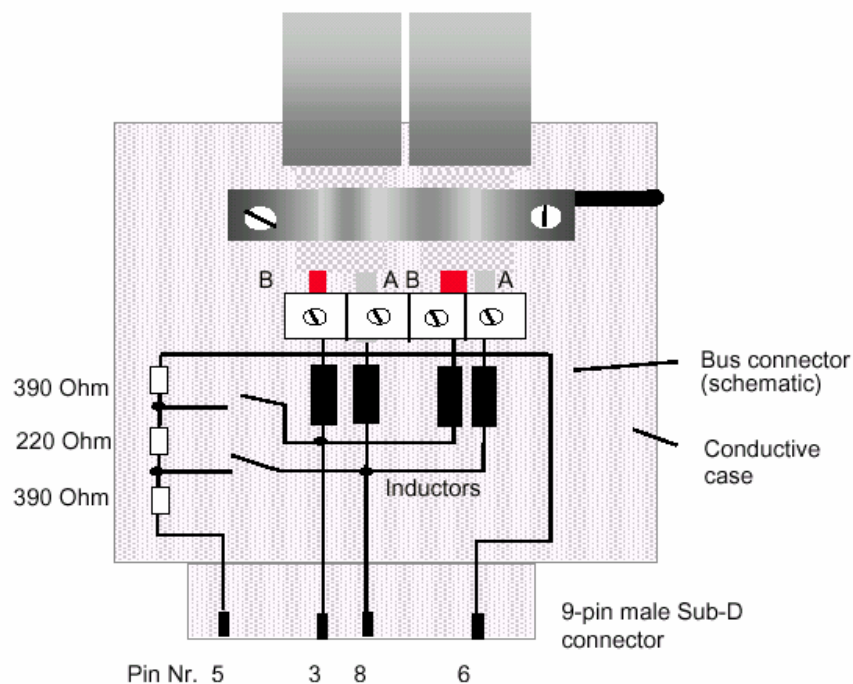


Figure 30 Bus connector with built-in terminating resistors and series inductors

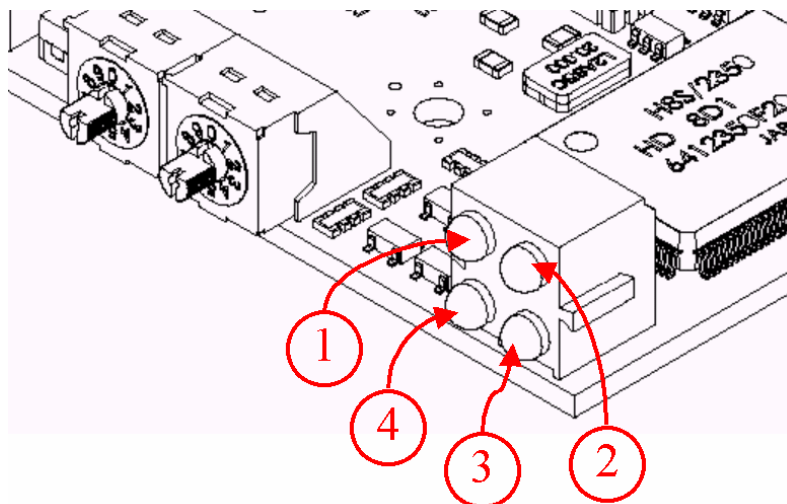


## Appendix 2 Errors and diagnostics

### The LED:s on the Anybus-S Slave module

*The LED:s on the Anybus-S Slave module have the meaning shown in Figure 31*

*and Table 2*



**Figure 31** Indication LEDs on the Anybus-S module

**Table 2** Description of the LEDs

LED #	Name	Colour	Meaning	Corrective actions
1	Not used			
2	On-Line	Green	Indicates that the module is On-Line on the fieldbus. <b>Solid Green</b> - Module is On-Line and data exchange is possible. <b>Turned Off</b> - Module is not On-Line	No actions needed
3	Off-Line	Red	Indicates that the module is Off-Line on the fieldbus. <b>Solid Red</b> - Module is Off-Line and no data exchange is possible. <b>Turned Off</b> - Module is not Off-Line	Check hardware, i.e. cable connection, baudrate setting etc.  Check hardware configuration in Step7
4	Fieldbus Diagnostics	Red	Indicates certain faults on the Fieldbus side. <b>Flashing Red 1 Hz</b> - Error in configuration: IN and/or OUT length set during initialisation of the module is not equal to the length set during configuration of the network. <b>Flashing Red 2 Hz</b> - Error in User Parameter data: The length/contents of the User Parameter data set during initialisation of the module is not equal to the length/contents set during configuration of the network. <b>Flashing Red 4 Hz</b> - Error in initialisation of the PROFIBUS communication ASIC. <b>Turned Off</b> - No diagnostics present	Check hardware configuration in Step7  If <b>Flashing Red 4 Hz</b> consult HMS



## Watchdog LED

There is also a bicolour (red/green) watchdog LED on the circuit board, indicating the module status according to Table 3 and Figure 32.

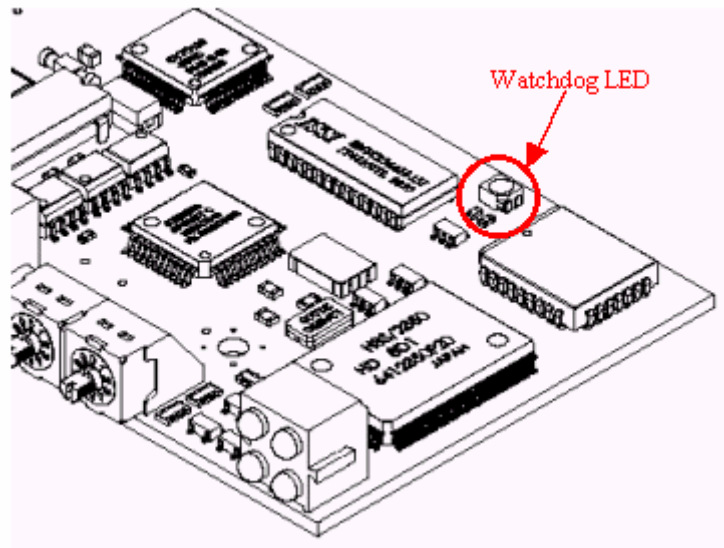


Figure 32 Watchdog LED position

Table 3 Indications on Watchdog LED

Watchdog function	Colour	Frequency
ASIC and FLASH ROM check fault	Red	2Hz
Module not initialised	Green	2Hz
Module initialised and running OK	Green	1Hz
RAM check fault	Red	1Hz
DPRAM check fault	Red	4Hz

## Diagnostics in Step7

Step7 and the HW Config program provide diagnostic possibilities via the PROFIBUS master over the network. Start with going online by clicking on the button ❶ in Figure 33. Then right-click on ❷ and chose “Module Information” and the diagnostic function will be started. The window ❸ will be displayed and available diagnostics can be read out.

What diagnostics that is available depends on the application. In standard mode there are no application specific diagnostics available. All the standard PROFIBUS diagnostics are supported and information regarding this can be found in the online documentation of Step7. Application specific diagnostics, error codes etc. can be found in the documentation of the application.

If the message shown in the window ❸ appears the reason can be the following:

- The Anybus module is not attached properly to the PROFIBUS network. Check cabling.
- The node address of the Anybus module does not match the address set in the Simatic Config program.

- The Anybus module is faulty and does not start up properly. Check the LEDs on the Anybus module.

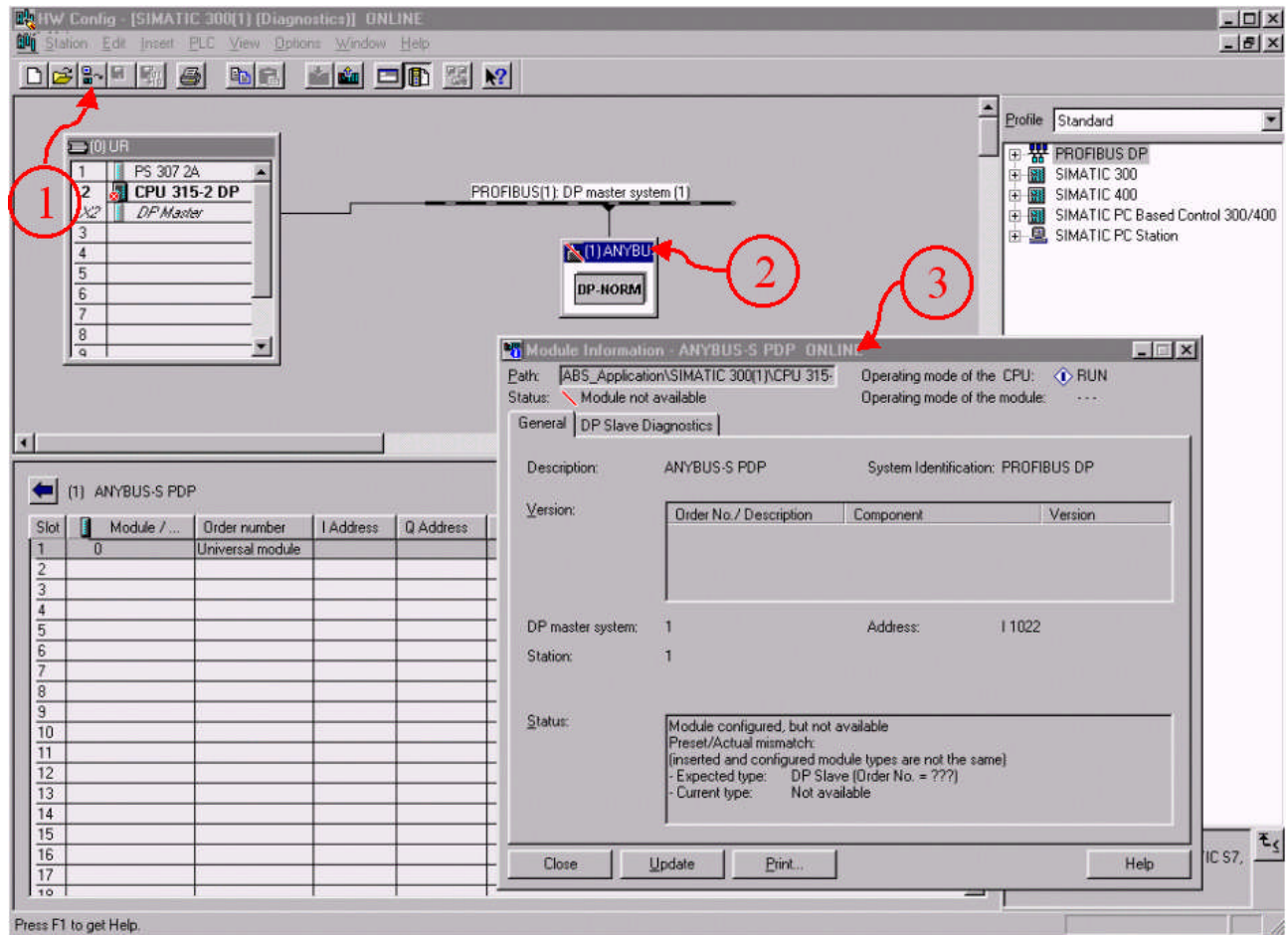


Figure 33 Step7 Hardware diagnostics

## Appendix 3 Troubleshooting network physics

The most common failure when the diagnostic tool reports “nonsense” is physical errors on the network like cable connect errors, miss contact, wrong termination etc. Some simple ways to find these errors will be mentioned here.

Data errors can occur if the PROFIBUS cable is incorrectly attached to the bus connectors. Such basic errors can be detected and remedied with the simple test method described below. The test method shown schematically in Figure 34 allows you to detect data wires which are swapped over in the bus connectors. During the test, the bus connectors must not be connected to any PROFIBUS devices. In addition, all bus terminating resistors should be removed or disabled. The tests require two 9 pin female Sub-D test connectors. Test connector 1 is provided with a single pole changeover switch, the moving contact of which is connected to the shield (case) of the test connector. The two fixed contacts are connected to pin 3 (data wire B) and pin 8 (data wire A), respectively. Test connector 2 is used to connect an Ohmmeter to the bus. During the cable tests, the two test connectors 1 and 2 are initially plugged into the two bus connectors at each end of the bus segment. The following tests can be made by taking measurements between the contacts 3 and 8 and the shield of test connector 2 while operating the changeover switch on test connector 1:

- Data cable swapped over
- Open circuit of one of the data cables
- Open circuit of the cable shield

- Short circuit between the data cables
- Short circuit between the data cables and the cable shield
- Additional bus terminating resistors inserted unintentionally

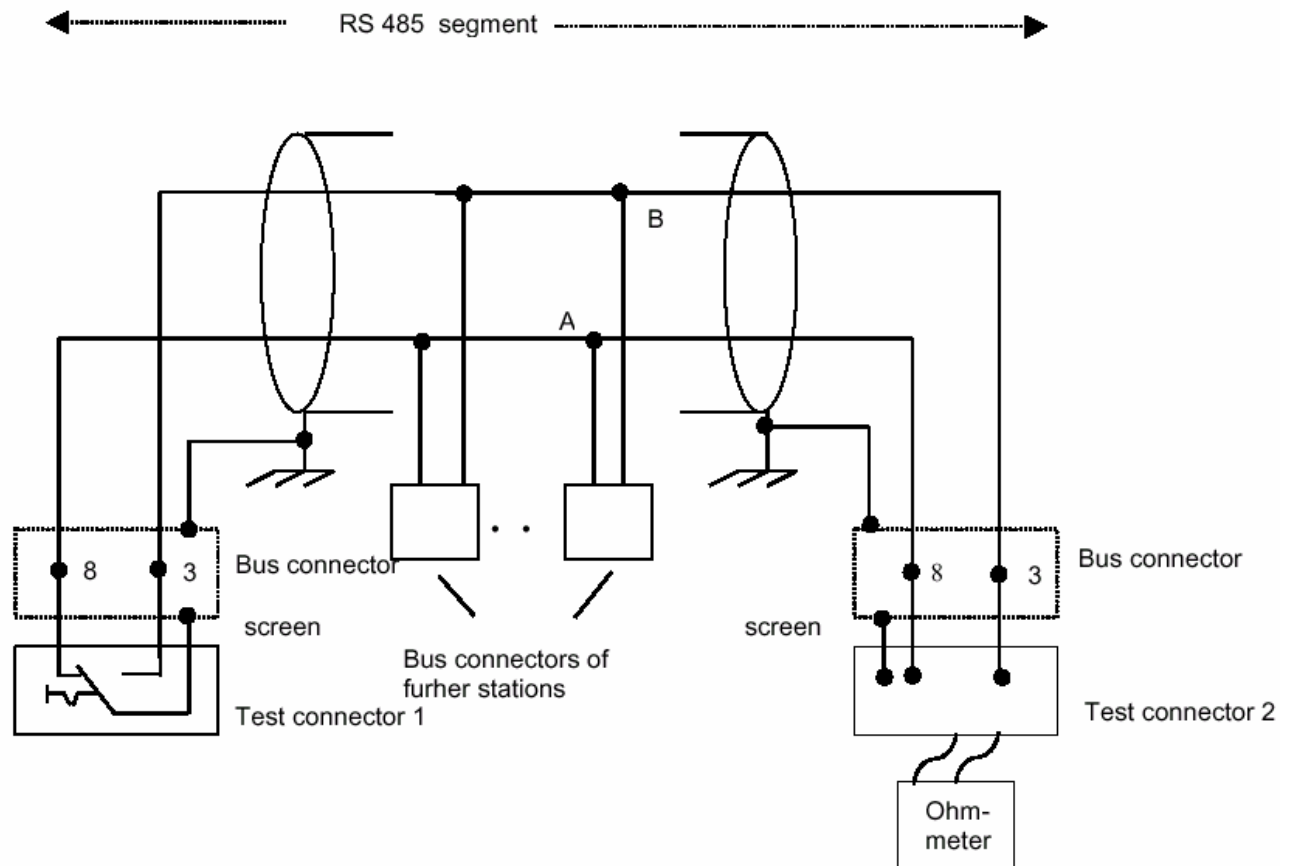


Figure 34 Troubleshooting the PROFIBUS network

### Carrying out the tests

- Configuration A: Set switch of test connector 1 to position 3 (connects pin 3 to the screen). Connect ohmmeter to test connector 2 between pin 3 and the screen.
- Configuration B: Set switch of test connector 1 to position 8 (connects pin 8 to the screen). Connect ohmmeter to test connector 2 between pin 8 and the screen.
- Configuration C: Set switch of test connector 1 to position 3 (connects pin 3 to the screen). Connect ohmmeter to test connector 2 between pin 8 and the screen.
- Configuration D: Switch position of test connector 1 is not important. Connect ohmmeter to test connector 2 between pin 3 and pin 8.

Warning: The measured value can be falsified if the ohmmeter connections are touched.

### Test 1:

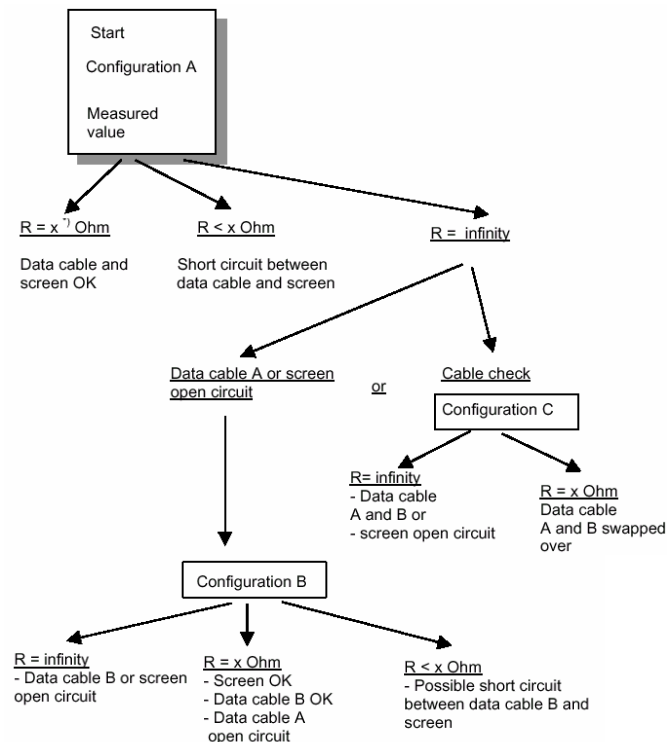


Figure 35 Test procedure 1

$x=110\text{ohm/km}$

**Test 2:** Same as test 1 except configuration A and configuration B are exchanged, i.e. start with configuration B.

**Test 3:** Too many bus terminating resistors inserted.

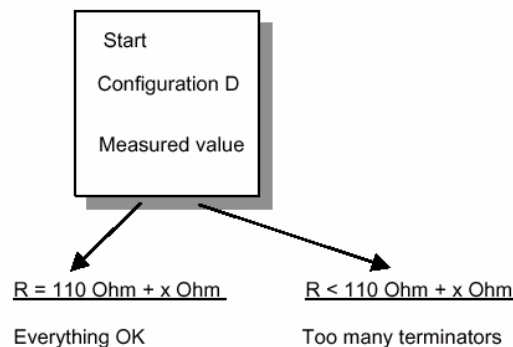


Figure 36 Test procedure 3

In order to assess the measurements you make, it is necessary to know the loop resistance of the bus cable segment. This is dependent on the cable type used and the installed cable length. The location of a fault can be determined without opening up the bus connectors by unplugging test connector 1 and plugging it into another bus connector which is closer to test connector 2 while carrying out repeated Ohmmeter measurements at test connector 2